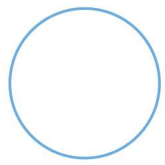


GPS/NB-IOT Tracker





About NB-IOT

Since the second half of 15 years, NB-IoT has been widely recognized by the industry in the past two years. At home, a large number of manufacturers of chips, modules, and terminals are emerging. With the promotion of the Internet of Things, NB-IoT IoT development is unstoppable °

piority :

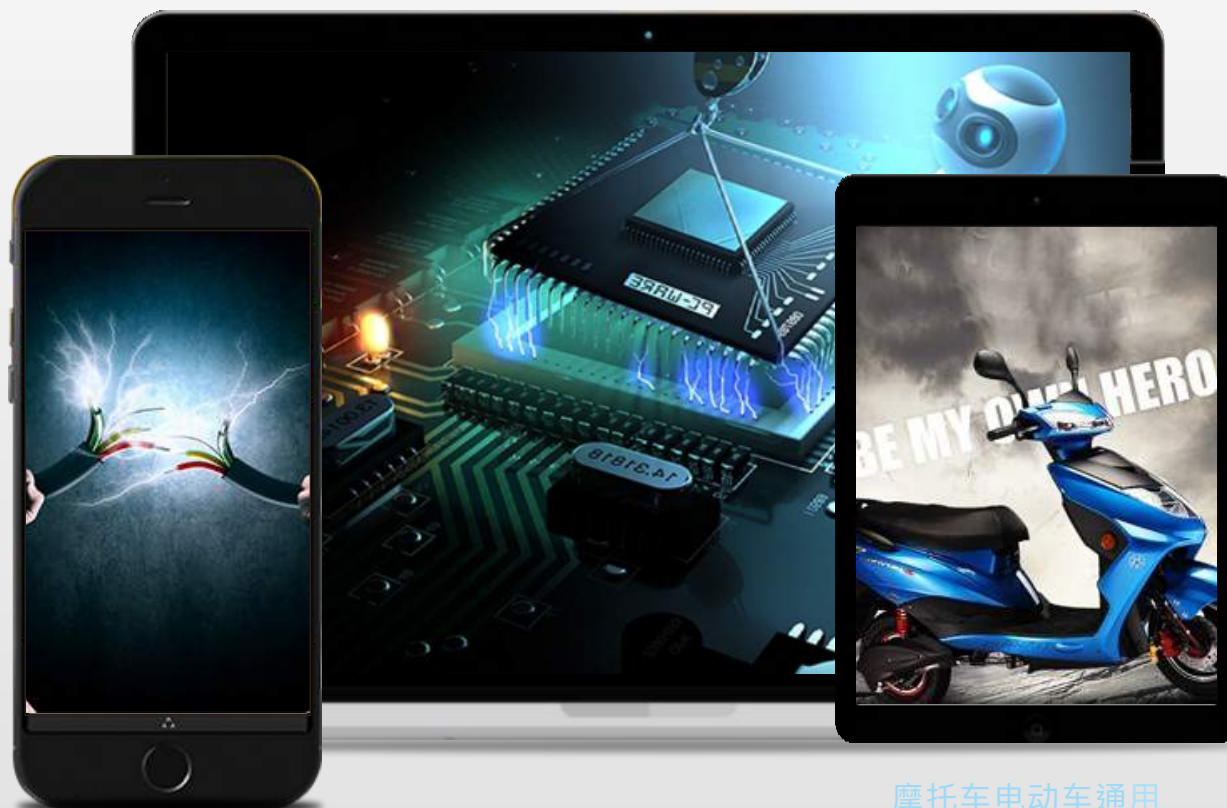
- 1 : wide and deep in coverage : 20dB+ up sensitivity compare with GPRS ;
- 2 : low power consumption : over 10 years bettery life ;
- 3 : low cost
- 4:Large connection: 50k+ user capacity/200kHz cell.





MDM9206 chip

Support eMTC\NB-IoT\GSM

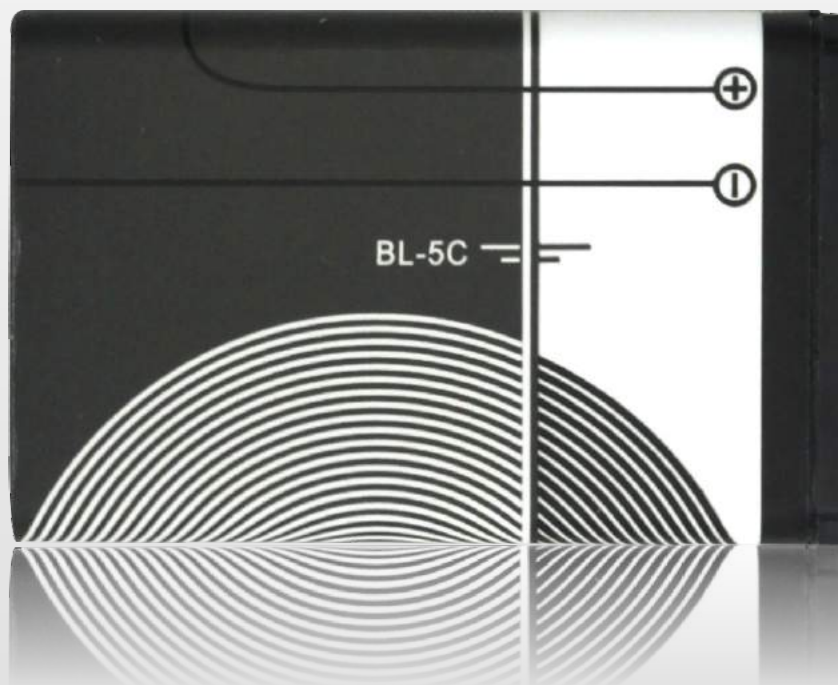


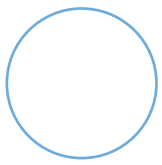
摩托车电动车通用



Wild voltage 9-90V

Input : 9-90V , any vehicles , with back up battery ,
can last 6 hours after electricity stop ◦





ACC test

Vehicle engine on/off test, when ACC on ,

Represents ignition status 。

When ACC off means flame out

Real time tracking

GPS\GLONASS\GALILEO, MODES swichting , make sure
on line in tracking 24 hours /365 days





Various alarms:



Power
failure
alarm



Displace
ment
alarm



Vibration
alarm

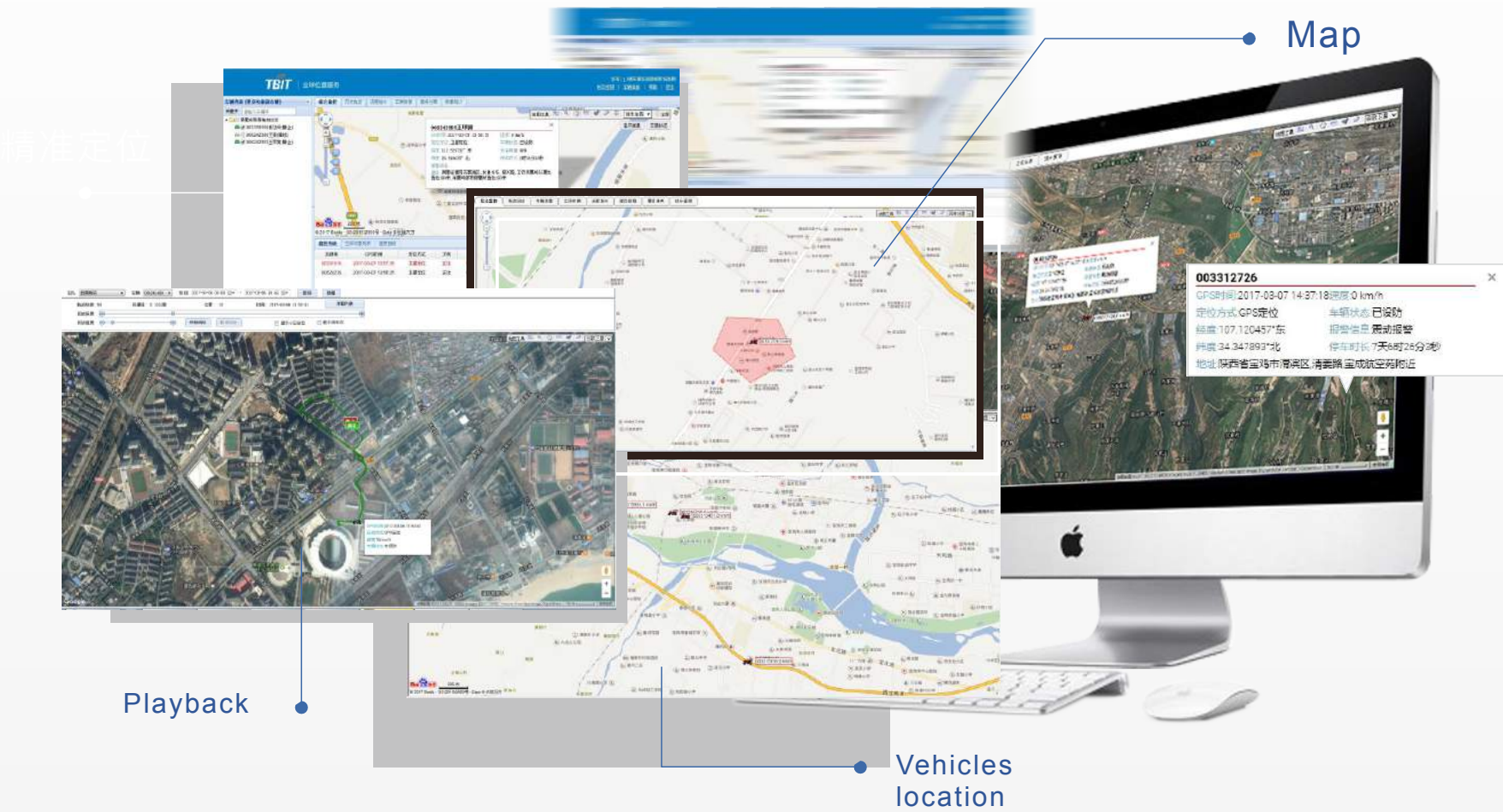
Monitoring vehicles by :



APP demo



Platform :



Performance parameters

GPS spec.

Channels : 56

Sensitivity : <-160dBm

Starting time: cold start 35sec. Hot start 1sec.

Accuracy : <5m

Speed accuracy :
0.3m/sec.

RF performance

Band : NB-IoT/eMTC : B1,B3,B5,B8

EGPRS : B2,B5,B3,B8

Hardware spec.

size : 75mm×52mm×20mm

Working voltage : 9V~90V

Nomal mode working current :

<15mA (12V)

Working temp: -20 °C ~ +70 °C

Humidity : 20 ~ 95%

Water proof : IP65